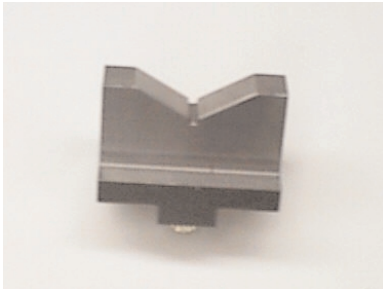
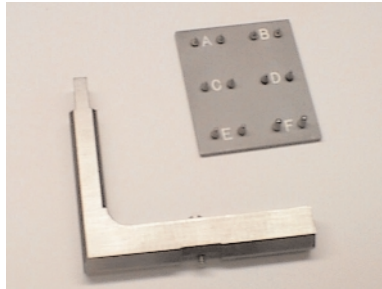


Labmaster Universal



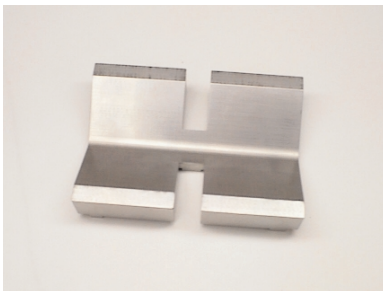
V-Block
Part # 306479



Internal Thread Probe (0.75"-5.5")
Part # U306381



Torque Wrench
Part # D10512010



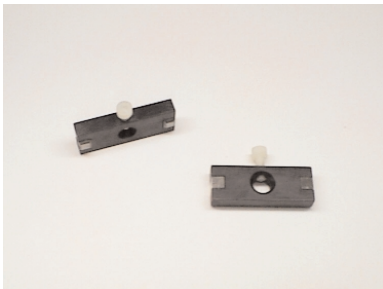
V-Block for Disks/Cylinders
Part # 306691



High Precision Adjuster
Part # D10543004



Tapered Master Plug
Part # 306905



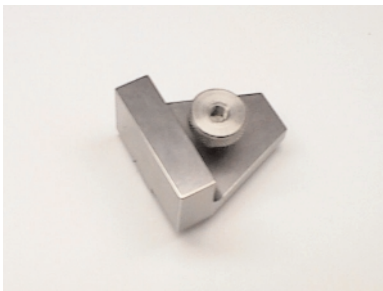
Magnetic Wire Holders
Part # U302595



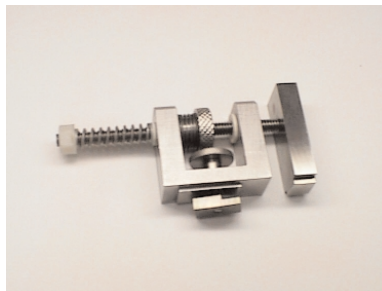
Adjustable Force System
Part # U306469



Probe Reference
Part # U306488



Backstop
Part # U306514



Probe Positioner
Part # U306465



Internal Thread Probe (0.12"-5.5")
Part # U306555

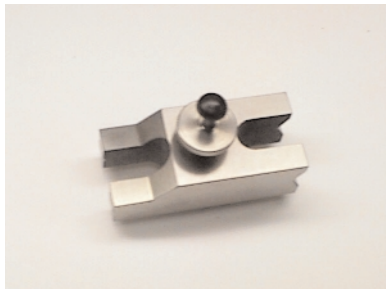


PRATT & WHITNEY®

Measurement Systems, Inc.

66 Douglas Street, Bloomfield, CT 06002-3619
Voice: 800.371.7174 • Fax: 860.286.7878 • info@prattandwhitney.com • www.prattandwhitney.com

Labmaster Universal



Dual Horseshoe Clamp
Part # U306516



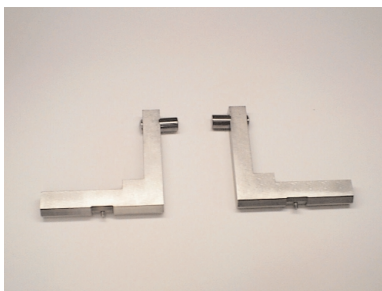
Angle Block
Part # U306515



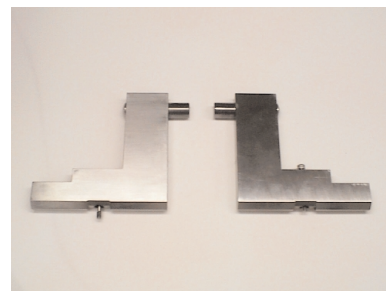
Riser Disk Assembly
Part # U306512



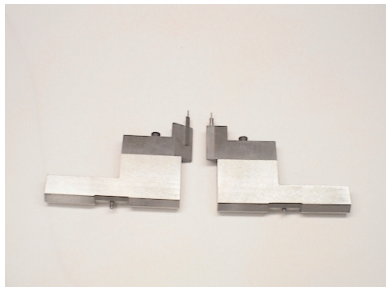
Internal Single Probe (0.02"-0.04")
Part # U306276



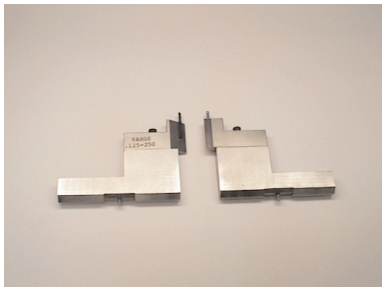
Tapered Flat Probes
Part # U306399



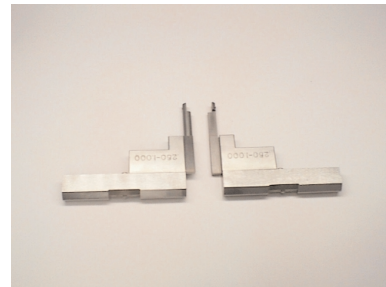
Flat Probes
Part # U306538



Internal Dual Probes (0.04"-0.125")
Part # U306433



Internal Dual Probes (0.125"-0.25")
Part # U306434



Internal Dual Probes (0.25"-1.00")
Part # U306435



PRATT & WHITNEY®

Measurement Systems, Inc.

66 Douglas Street, Bloomfield, CT 06002-3619
Voice: 800.371.7174 • Fax: 860.286.7878 • info@prattandwhitney.com • www.prattandwhitney.com